



RAYMOND BROWN
COMMUNITY MATTERS

Nature Walks

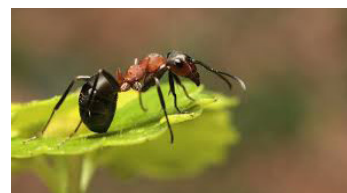
What can you spot whilst walking in the wilderness? Cross these out as you see them.



Butterfly



Bumble Bee



An Insect with legs



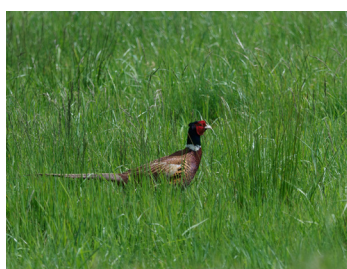
Wildflowers



A tree taller than you



Prints or marks



Pheasant



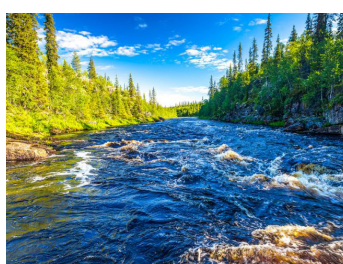
An animal with four legs



A bird flying



Newly planted trees



Streams and Rivers



Grass